

# **MPX troubleshooting flowchart**

## **Dodge 2500/3500/4500/5500**

### **2015 and above**

### **(Using snowplow 6 wires)**

Front Installation

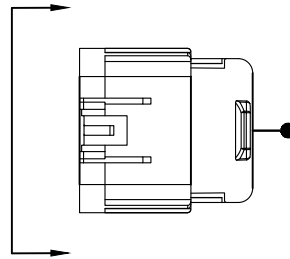
(module installed in the front)

Important Note:

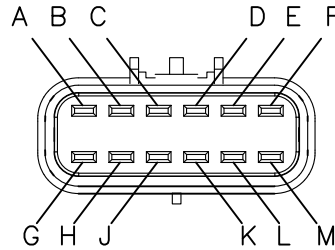
- Use Power Probe III tool to troubleshoot the MPX system.
- <https://www.youtube.com/watch?v=FuzfCO1A1Vw> – Link for Power Probe III tool instructions
- Update the modular box by updating tool (53707-N) if it was installed before 2017.
- See last page for more information on updating the modular box.

Controller Harness (Male Pins)

(FRONT VIEW)



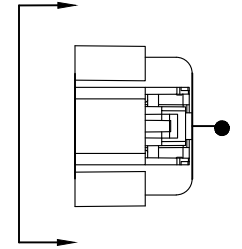
PIN #	COLOR	FUNCTION
A	RED	POS (+) to RING
B	BLACK	GROUND
C	BROWN	PUMP (SOLENOID)
D	CAVITY PLUG	-
E	CAVITY PLUG	-
F	CAVITY PLUG	-
G	CAVITY PLUG	-
H	CAVITY PLUG	-
J	CAVITY PLUG	-
K	WHITE	CONTROLLER SIGNAL
L	GREEN	CONTROLLER SIGNAL
M	RED/WHITE	POS (+) SWITCHED POWER (COMING FROM IGNITION SOURCE)



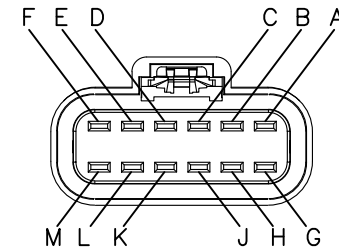
PIN FACE  
(FRONT VIEW)

Light Harness (Female Pins)

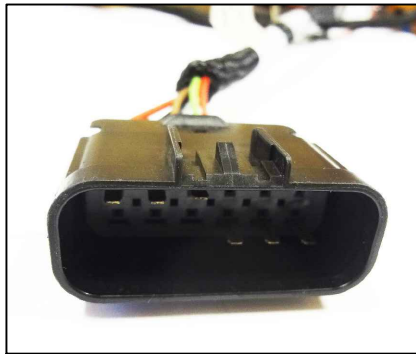
(FRONT VIEW)



PIN #	COLOR	FUNCTION
A	RED	POS (+) to RING
B	BLACK	GROUND
C	GREEN/YELLOW	TRIGGER
D	YELLOW/RED	DRIVERS SIDE HIGH BEAM
E	GREEN/RED	DRIVERS SIDE LOW BEAM
F	WHITE/RED	COMMON
G	VIOLET	DRIVERS SIDE TURN
H	PINK	CURB SIDE TURN
J	GREY	RUN/PARK
K	CAVITY PLUG	-
L	CAVITY PLUG	-
M	CAVITY PLUG	-



PIN FACE  
(FRONT VIEW)



Plug A

Link for removing and reinstalling pins from female plug

<https://www.youtube.com/watch?v=VAmp1Qlegs>



53708-02-N

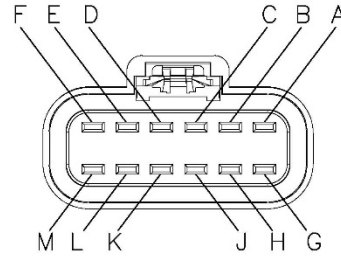
Insert this pin into Plug B for testing 12V using Power Probe III tool



Plug B

Link for removing and reinstalling pins from male plug

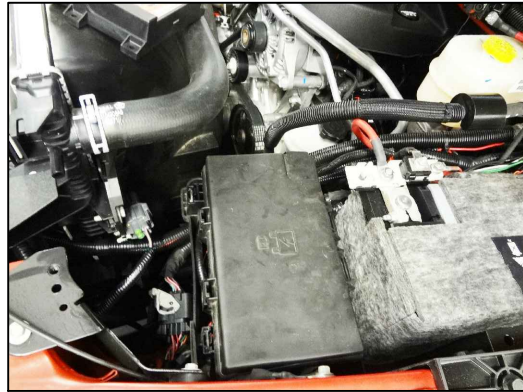
<https://www.youtube.com/watch?v=BB6tE096HkQ>



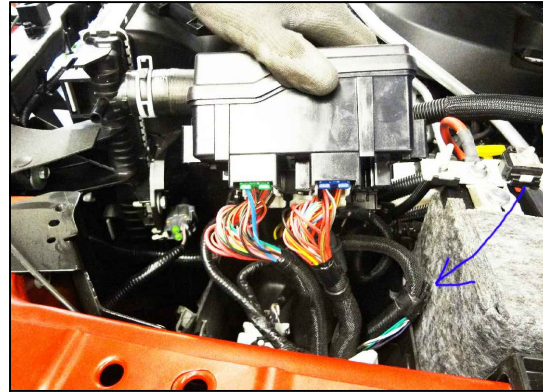
PIN FACE  
(FRONT VIEW)

PIN #	COLOR	FUNCTION
A	RED	POS (+) to RING
B	BLACK	GROUND
C	GREEN/YELLOW	TRIGGER
D	YELLOW/RED	DRIVERS SIDE HIGH BEAM
E	GREEN/RED	DRIVERS SIDE LOW BEAM
F	WHITE/RED	COMMON
G	VIOLET	DRIVERS SIDE TURN
H	PINK	CURB SIDE TURN
J	GREY	RUN/PARK
K	CAVITY PLUG	-
L	CAVITY PLUG	-
M	CAVITY PLUG	-

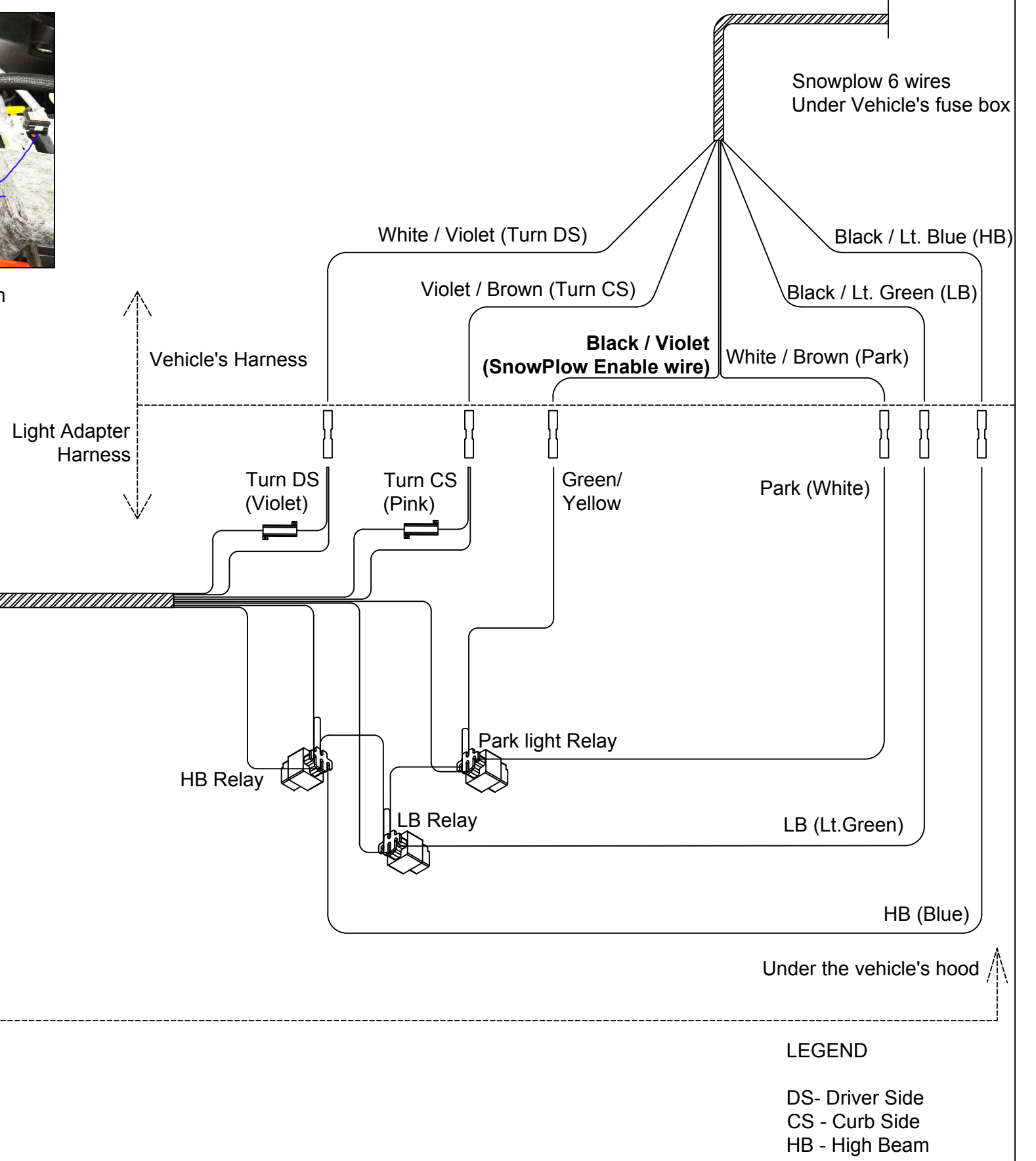
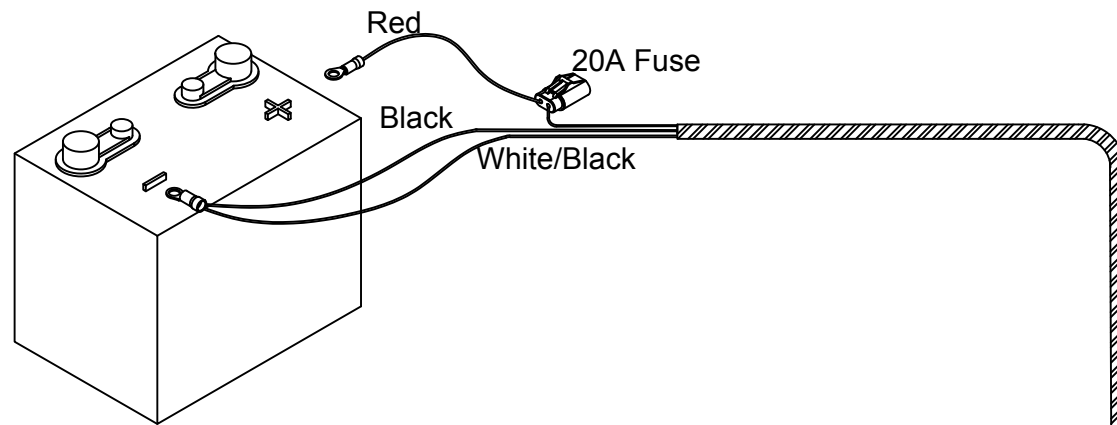
Plug view of Truck Light Harness- Front Installation (Dodge 6 wires)  
Connect Pin A and Pin C



Unclip the fuse box



Lift the box and find 6 wires, attach them to the harness as shown



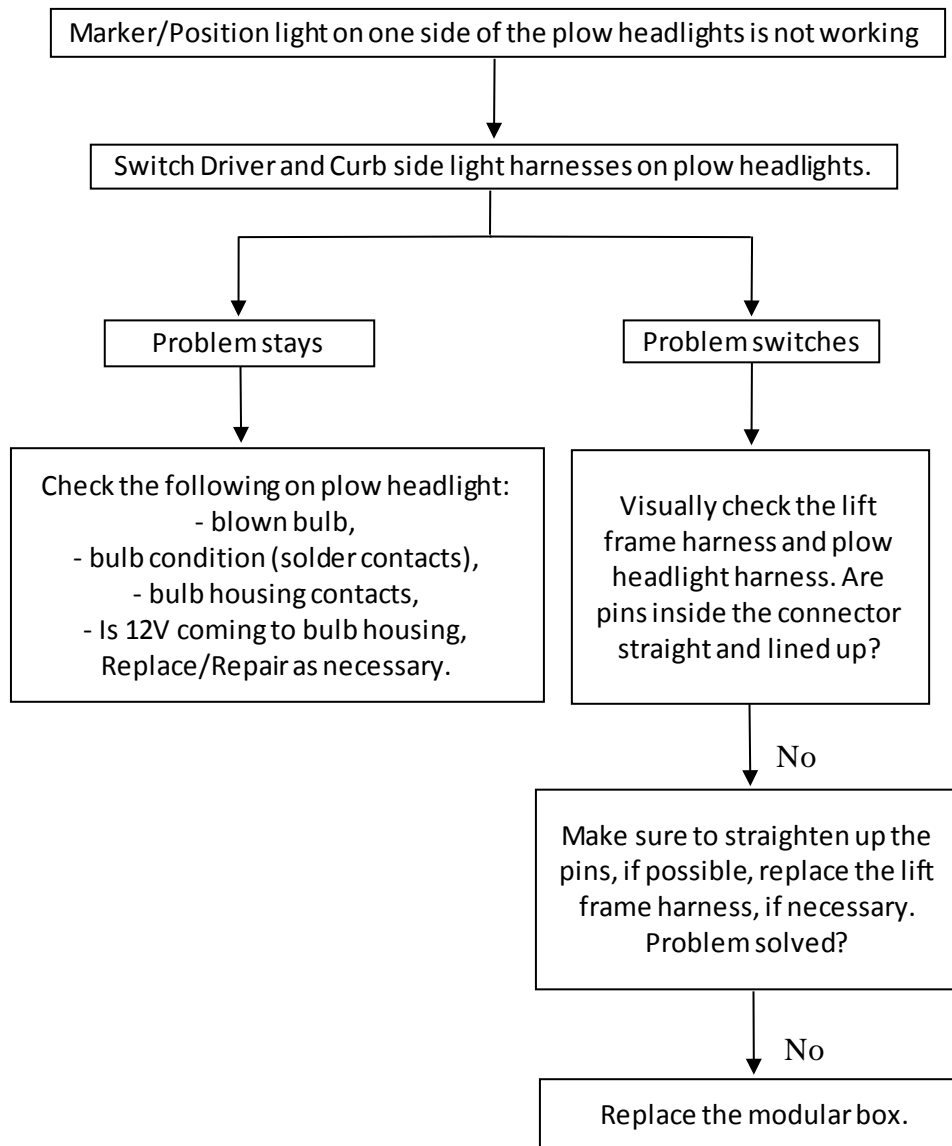
	Vehicle Harness		Light Adapter Harness	Function
Connect	Black/Lt. Blue	To	Blue	High Beam
Connect	Black/Lt. Green	To	Lt. Green	Low Beam
Connect	White/Brown	To	White	Park
Connect	White/Violet	To	Violet	DS Turn
Connect	Violet/Brown	To	Pink	CS Turn
Connect	Black/Violet	To	Green/Yellow	Snowplow Enable wire

LEGEND

- DS- Driver Side
- CS - Curb Side
- HB - High Beam
- LB - Low Beam

Click on the link below to refer to the specific troubleshooting step:

- Marker/Position light on one side of plow headlights is not working.
- Marker/Position lights on both the sides of plow headlights are not working
- High beam / Low beam on one side of the plow headlights is not working.
- High beam on both the sides of plow headlights are not working.
- Low beam on both the sides of plow headlights are not working.
- Turn Signal on Driver side of the plow headlight is not working.
- Turn Signal on Curb side of the plow headlight is not working.
- Plow does not operate and lights on the plow are not working.
- Plow does not operate.
- Lights do not transfer to the plow.
- Individual functions on the plow are not working.
- Controller lights keep on changing.



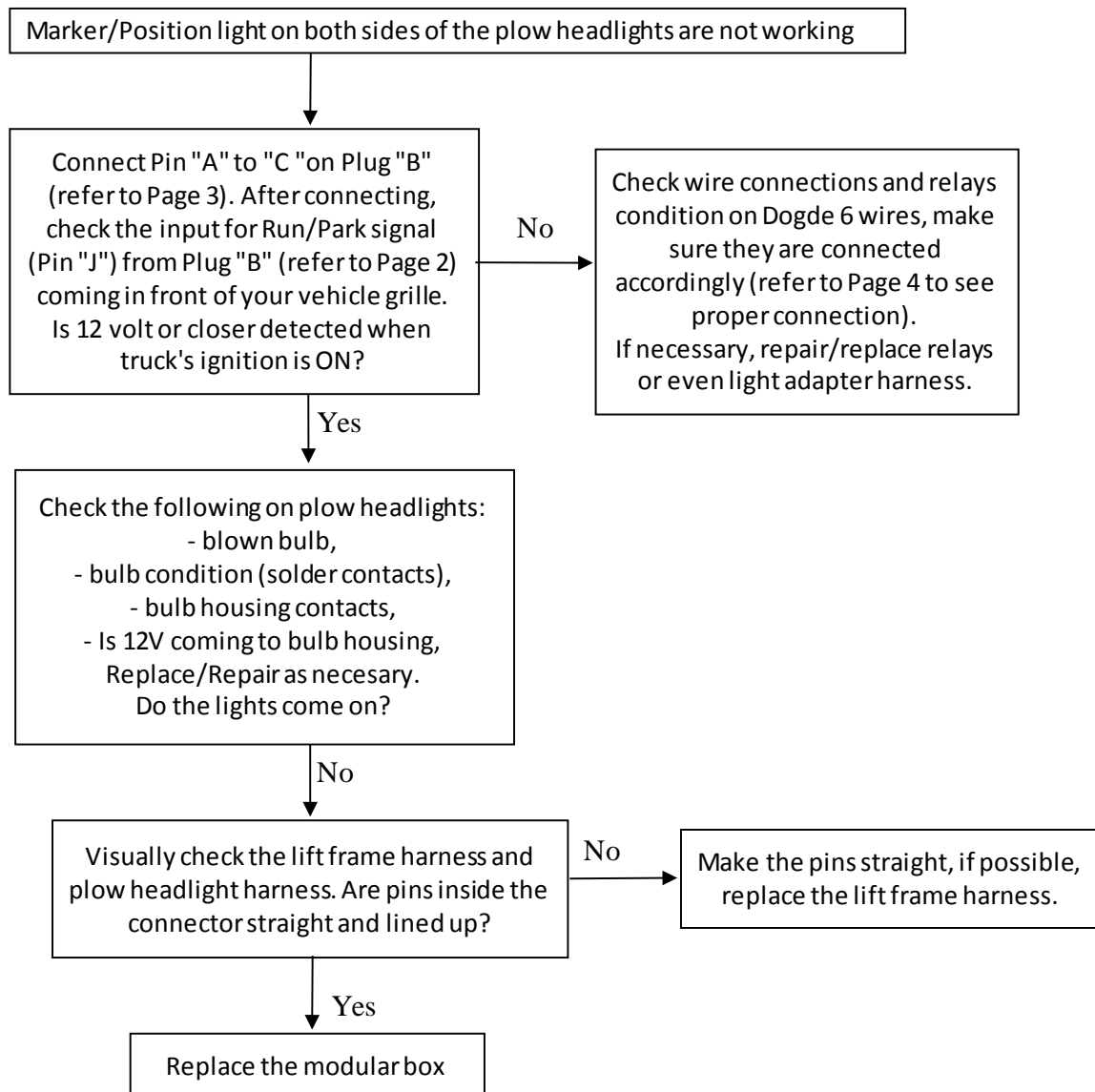
Restart truck's ignition after every step of troubleshooting.

Click on the link [https://www.youtube.com/watch?v=NwhY\\_zgbx6A](https://www.youtube.com/watch?v=NwhY_zgbx6A) to watch the video of this specific troubleshooting step.

Link for 800084 headlights: <https://www.youtube.com/watch?v=LJlgbdwop8Q>

Link for 800085 headlights: <https://www.youtube.com/watch?v=fn09WLSG-vI>

Link for 800086 headlights: <https://www.youtube.com/watch?v=sA7AxDIYgwc>



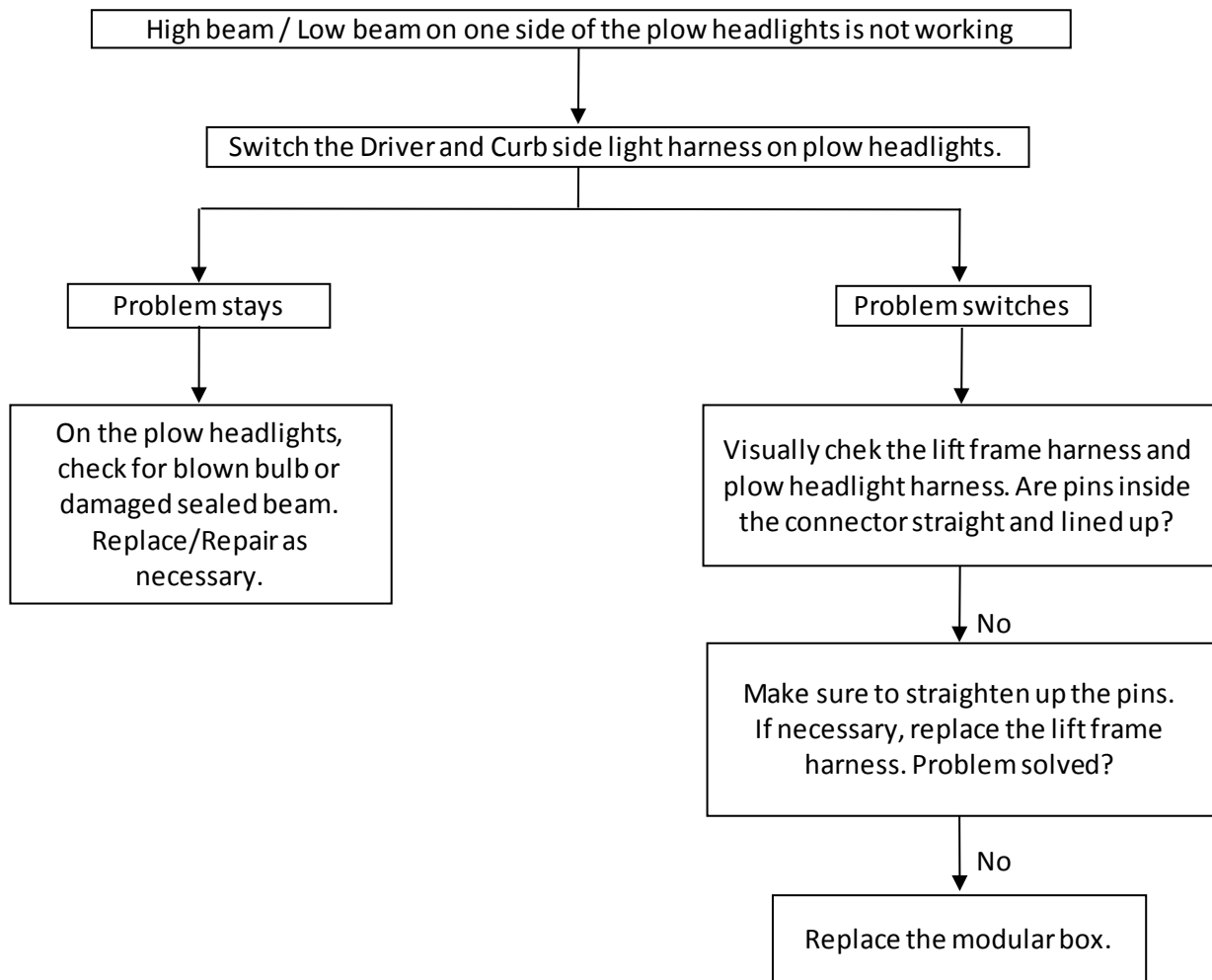
Restart truck's ignition after every step of troubleshooting.

Click on the link <https://www.youtube.com/watch?v=k-EJpEOH0Mc> to watch the video of this specific troubleshooting step.

Link for 800084 headlights: <https://www.youtube.com/watch?v=LJlgbdwop8Q>

Link for 800085 headlights: <https://www.youtube.com/watch?v=fn09WLSG-vI>

Link for 800086 headlights: <https://www.youtube.com/watch?v=sA7AxDIYgwc>



**Restart truck's ignition after every step of troubleshooting.**

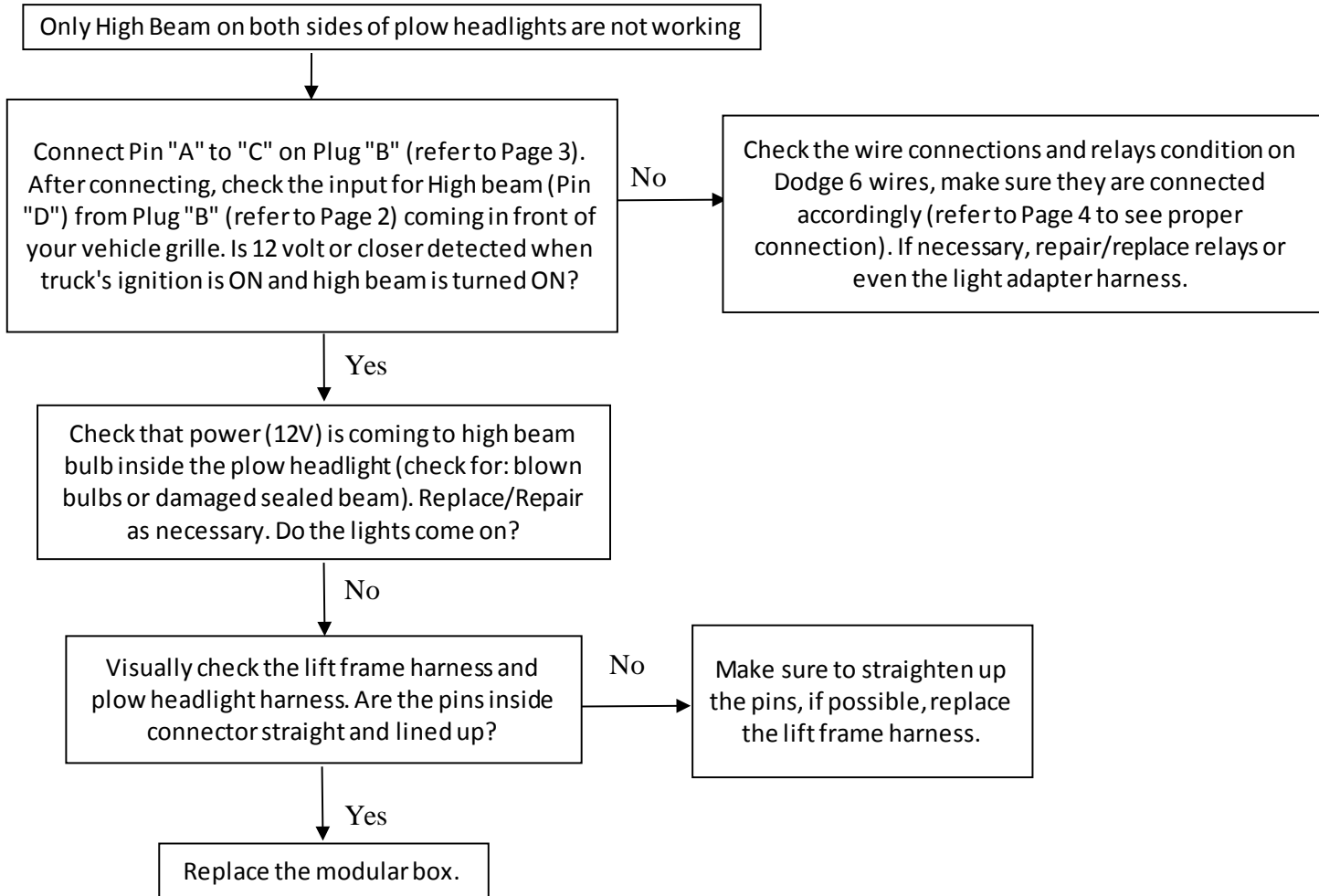
Click on the link <https://www.youtube.com/watch?v=c4yPVrKAKQo> to watch the video of this specific troubleshooting step.

Link for 800084 headlights: <https://www.youtube.com/watch?v=LJlgbdwop8Q>

Link for 800085 headlights: <https://www.youtube.com/watch?v=fn09WLSG-vI>

Link for 800086 headlights: <https://www.youtube.com/watch?v=sA7AxDIYgwc>





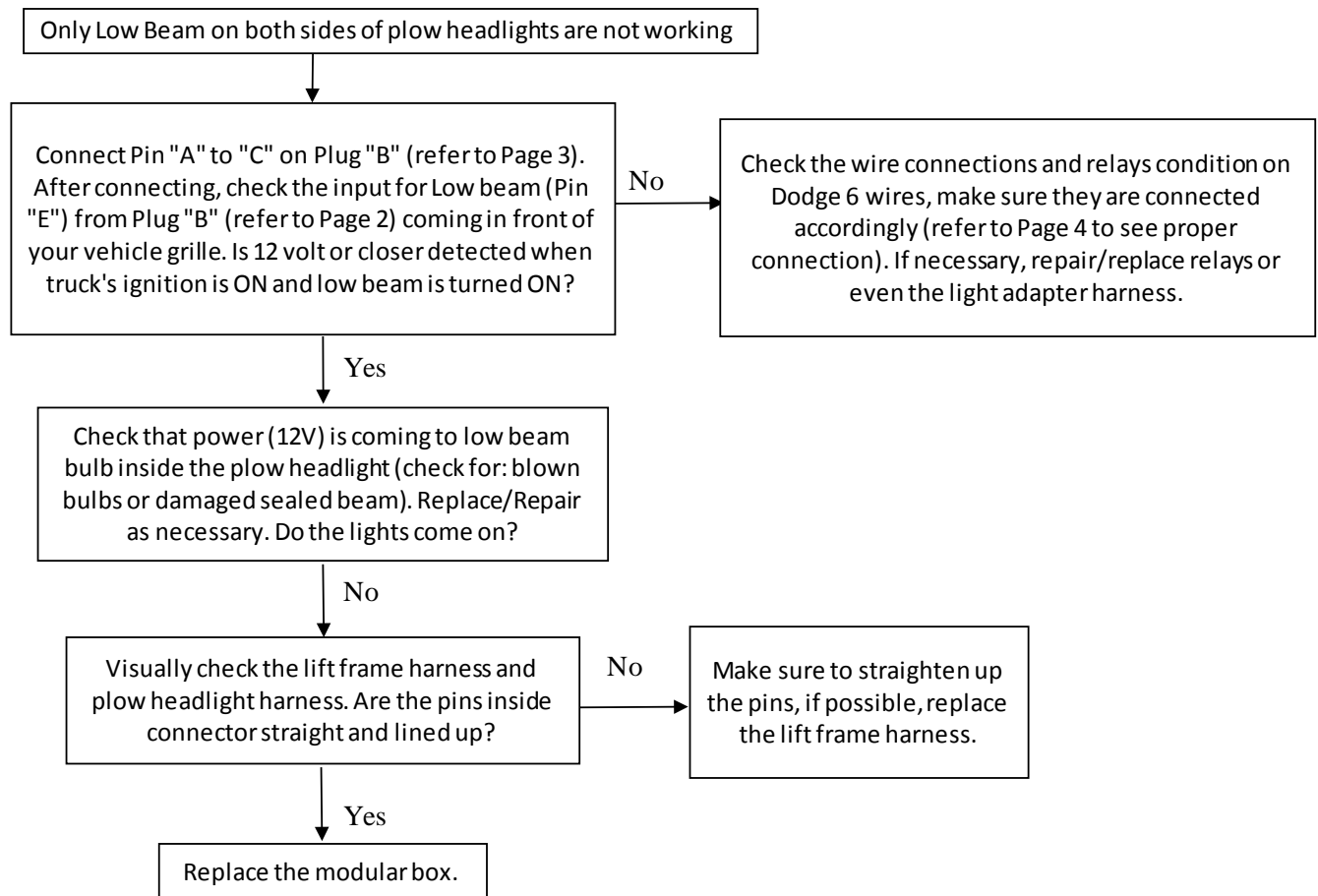
**Restart truck's ignition after every step of troubleshooting.**

Click on the link <https://www.youtube.com/watch?v=uyTPPK0zJSE> to watch the video of this specific troubleshooting step.

Link for 800084 headlights: <https://www.youtube.com/watch?v=LJlgbdwop8Q>

Link for 800085 headlights: <https://www.youtube.com/watch?v=fn09WLSG-vI>

Link for 800086 headlights: <https://www.youtube.com/watch?v=sA7AxDIYgwc>



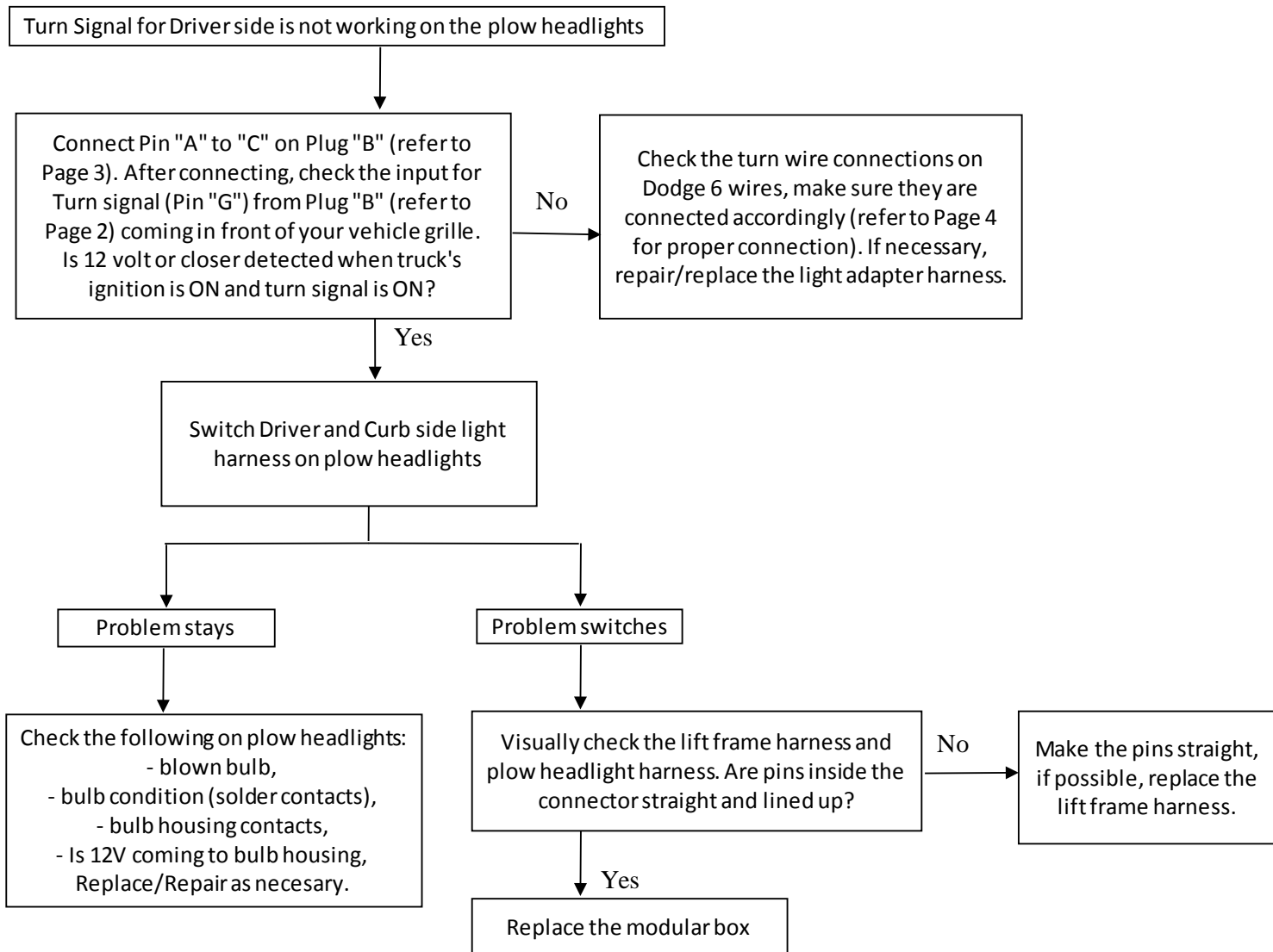
**Restart truck's ignition after every step of troubleshooting.**

Click on the link <https://www.youtube.com/watch?v=vn8NaWM6WAw> to watch the video of this specific troubleshooting step.

Link for 800084 headlights: <https://www.youtube.com/watch?v=LJlgbdwop8Q>

Link for 800085 headlights: <https://www.youtube.com/watch?v=fn09WLSG-vI>

Link for 800086 headlights: <https://www.youtube.com/watch?v=sA7AxDIYgwc>



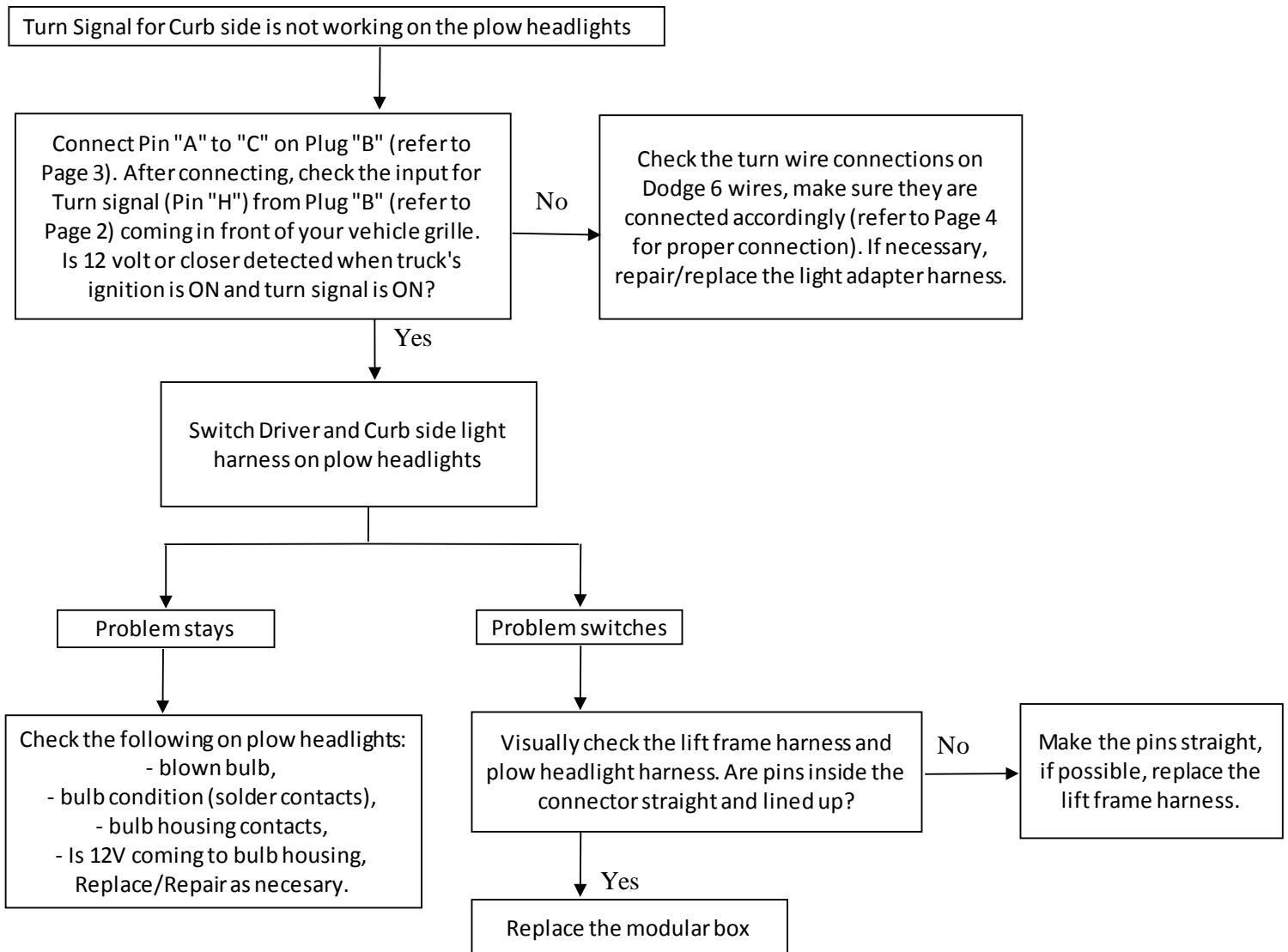
**Restart truck's ignition after every step of troubleshooting.**

Click on the link <https://www.youtube.com/watch?v=3svwMLNWIPI> to watch the video of this specific troubleshooting step.

Link for 800084 headlights: <https://www.youtube.com/watch?v=LJlgbdwop8Q>

Link for 800085 headlights: <https://www.youtube.com/watch?v=fn09WLSG-vI>

Link for 800086 headlights: <https://www.youtube.com/watch?v=sA7AxDIYgwc>



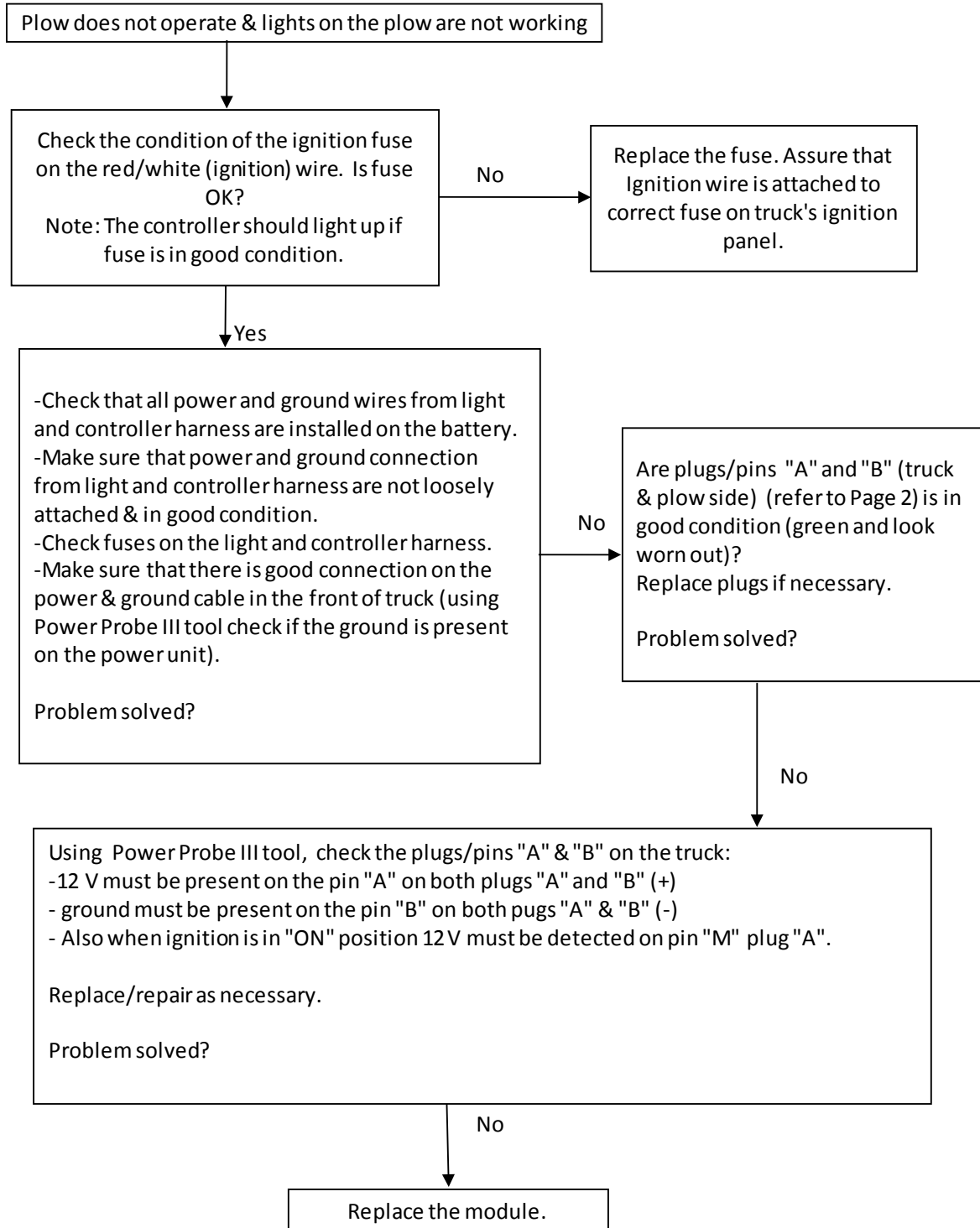
**Restart truck's ignition after every step of troubleshooting.**

Click on the link <https://www.youtube.com/watch?v=hC37CmltS6Y> to watch the video of this specific troubleshooting step.

Link for 800084 headlights: <https://www.youtube.com/watch?v=LJlgbdwop8Q>

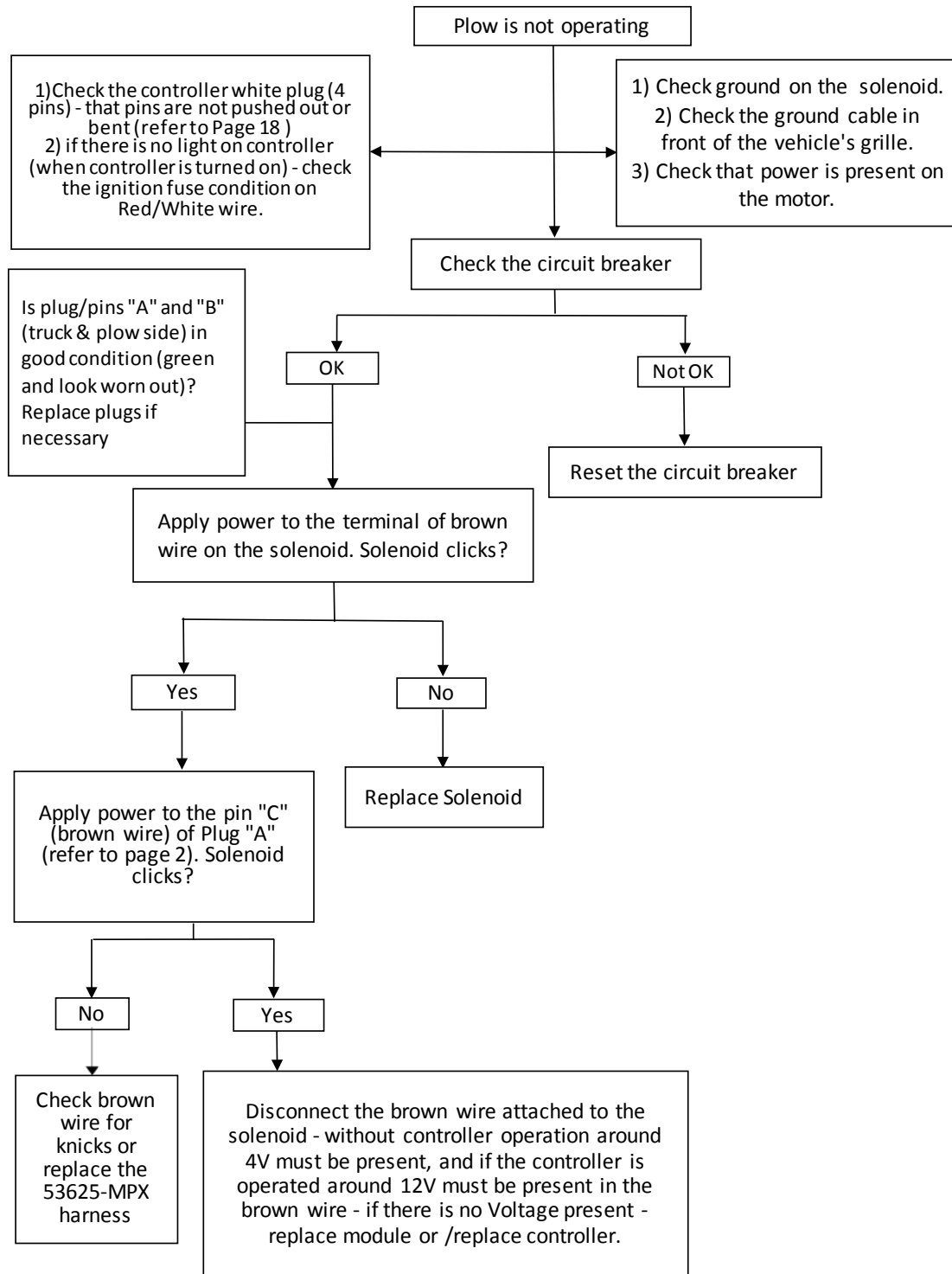
Link for 800085 headlights: <https://www.youtube.com/watch?v=fn09WLSG-vI>

Link for 800086 headlights: <https://www.youtube.com/watch?v=sA7AxDIYgwc>



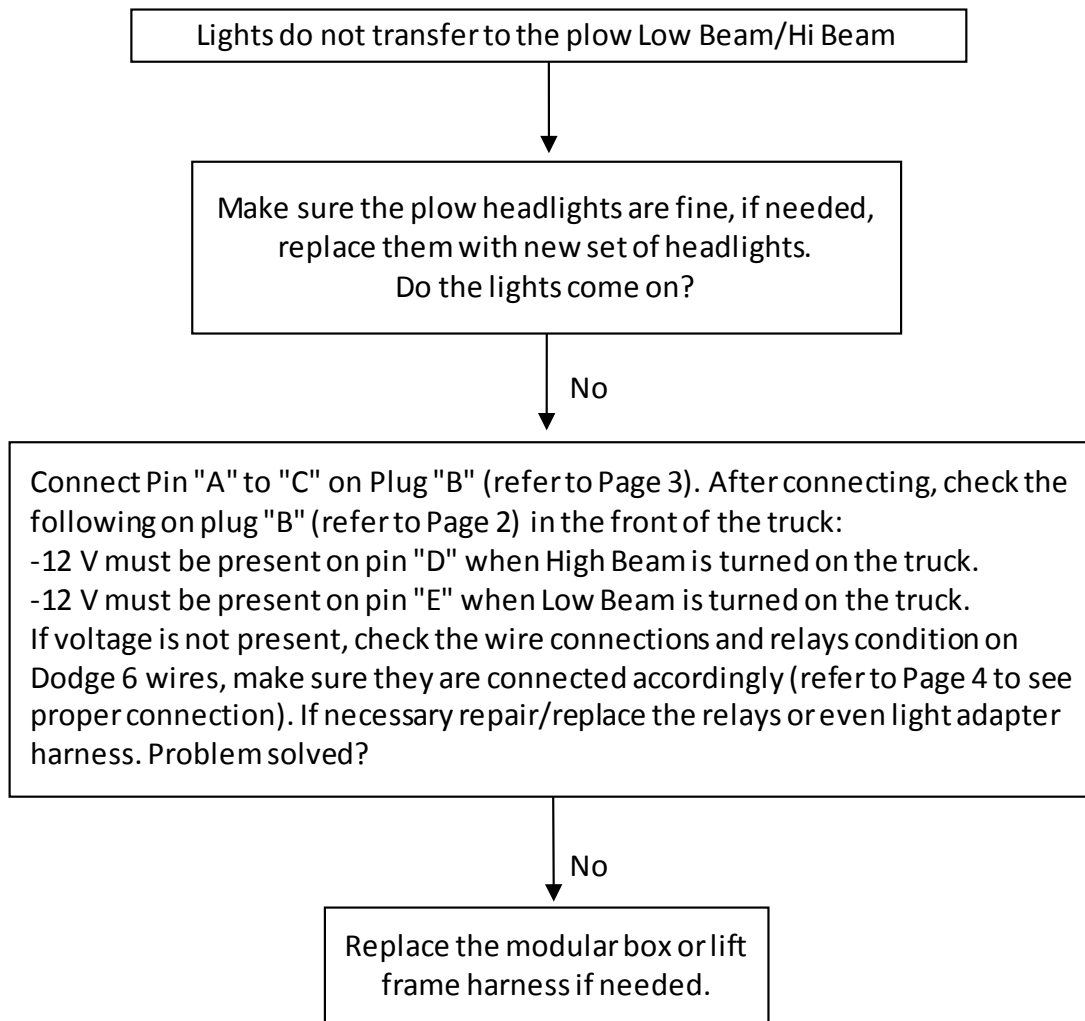
**Restart truck's ignition after every step of troubleshooting.**

Click on the link <https://www.youtube.com/watch?v=7Xb6IqrcroE> to watch the video of this specific troubleshooting step.



Restart truck's ignition after every step of troubleshooting.

Click on the link <https://www.youtube.com/watch?v=VFVqe-yPWjU&feature=youtu.be> to watch the video of this specific troubleshooting step.



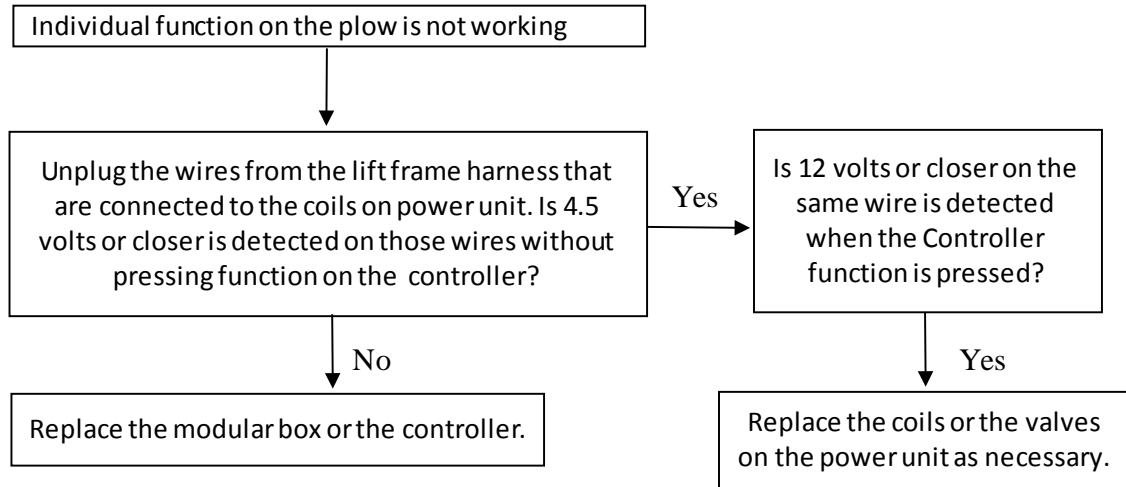
**Restart truck's ignition after every step of troubleshooting**

Click on the link <https://www.youtube.com/watch?v=uyTPPK0zJSE> & <https://www.youtube.com/watch?v=vn8NaWM6WAw> to watch the video of this specific troubleshooting step.

Link for 800084 headlights: <https://www.youtube.com/watch?v=LJlgbdwop8Q>

Link for 800085 headlights: <https://www.youtube.com/watch?v=fn09WLSG-vI>

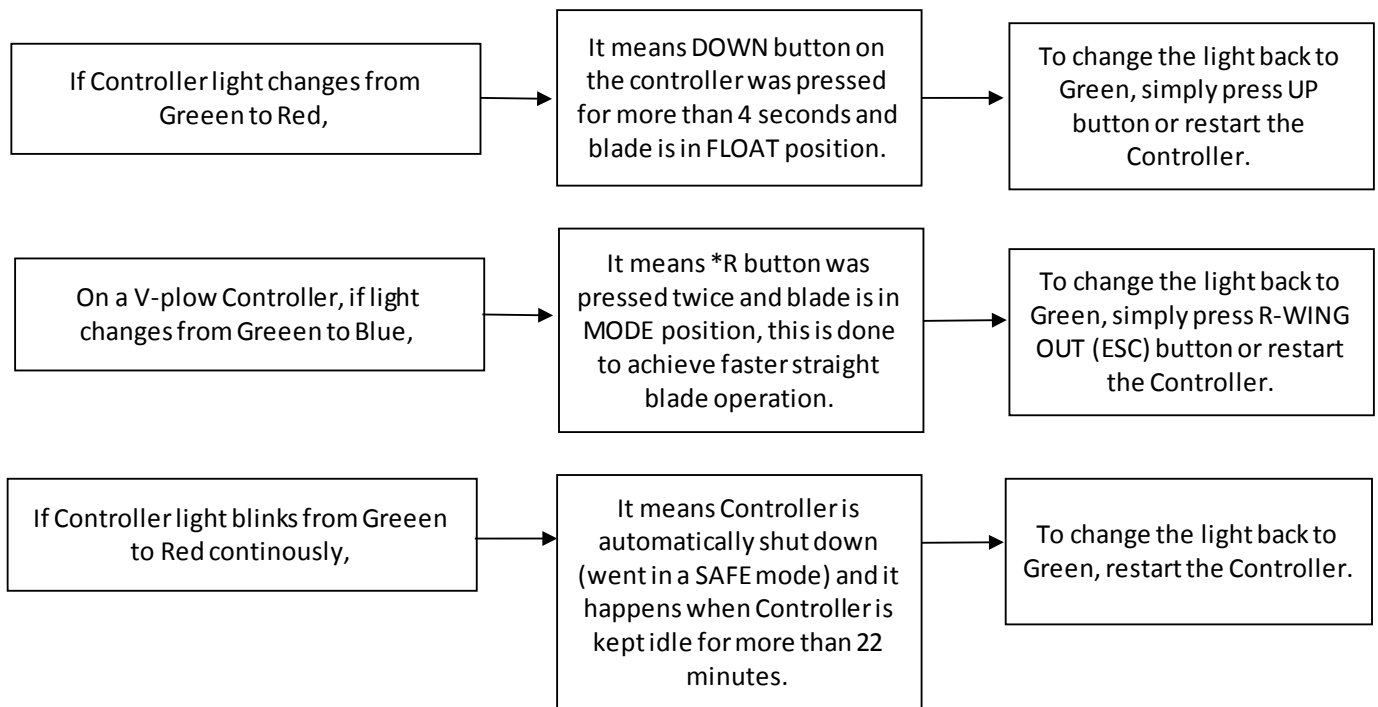
Link for 800086 headlights: <https://www.youtube.com/watch?v=sA7AxDIYgwc>



Restart truck's ignition after every step of troubleshooting.

Click on the link <https://www.youtube.com/watch?v=K1ERrFWnUw0> to watch the video of this specific troubleshooting step.

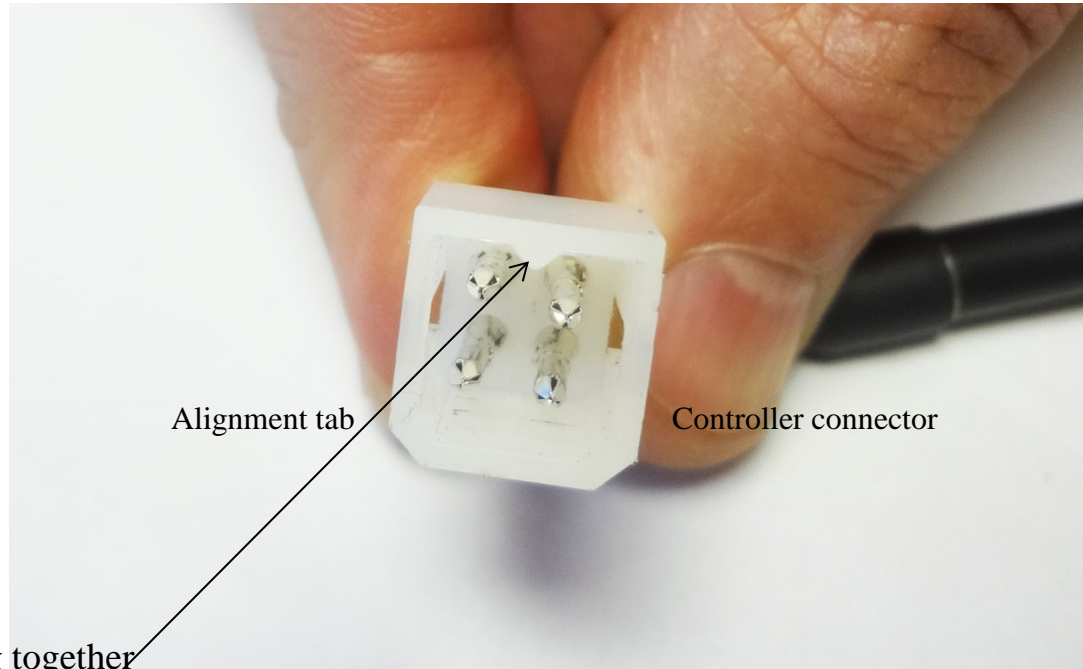




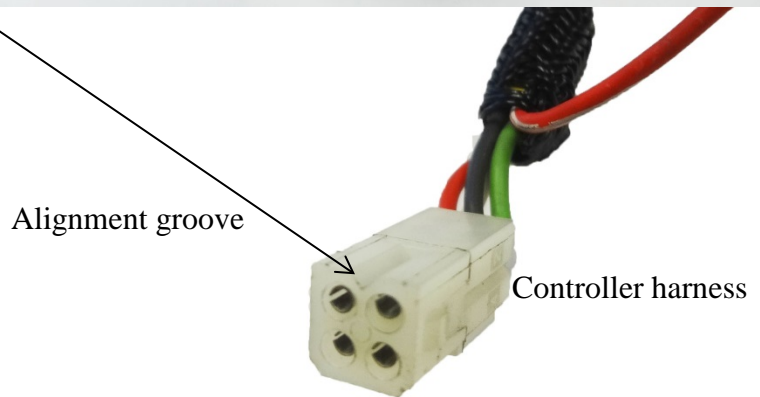
**Restart truck's ignition after every step of troubleshooting.**

Click on the link <https://www.youtube.com/watch?v=gKqEarX4FrQ> to watch the video of this specific troubleshooting step.

## Connectors alignment for the MPX system



Must align before plugging together



## Tool for updating MPX module box (53707-N)



Check the link below to see step by step procedure on how to update the module box on your truck:

<https://www.youtube.com/watch?v=nGSTAm8hZ9Y>